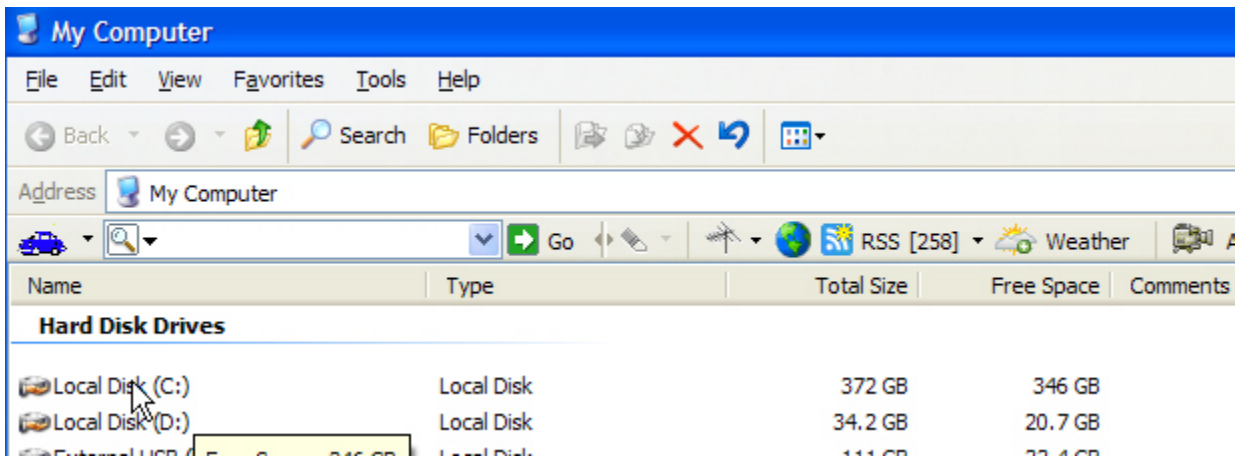
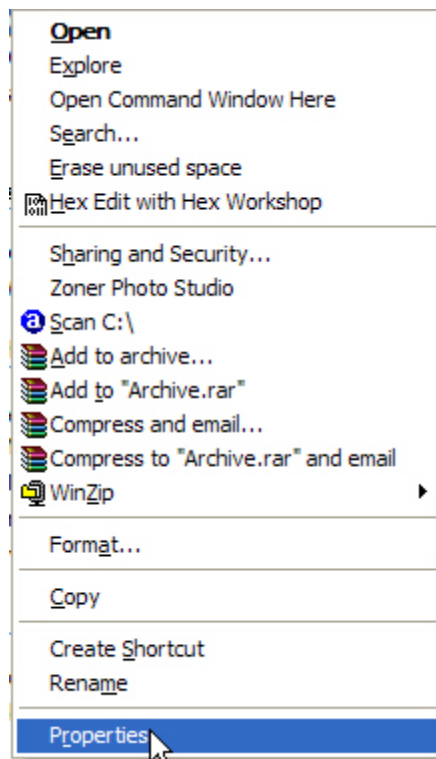


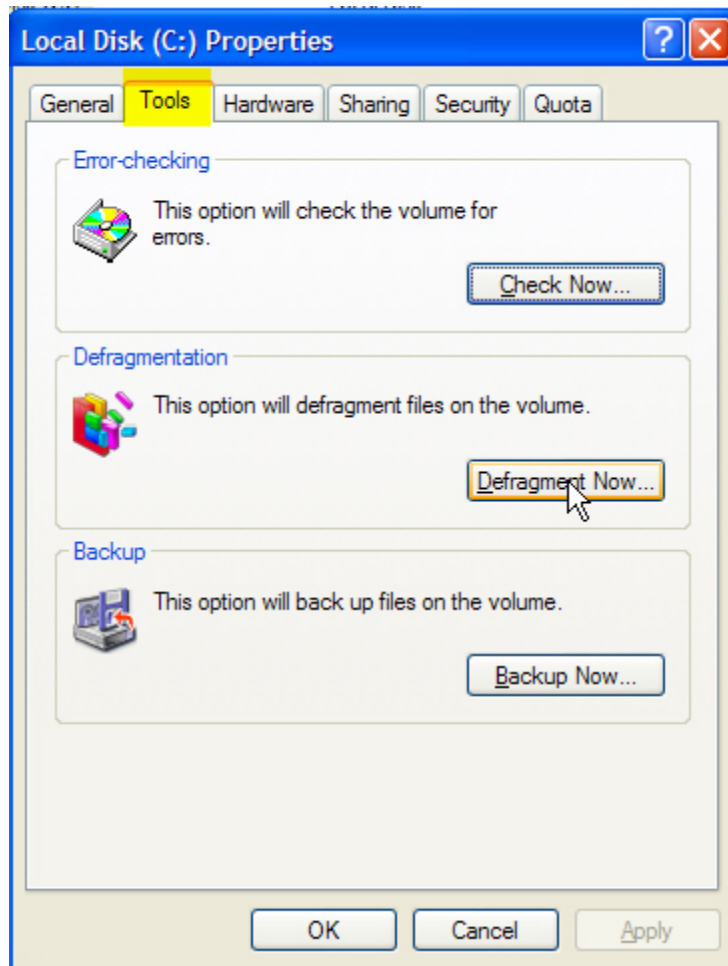
Go to **Start**  
**Double-click** on **My Computer**  
**Right-click** on Drive C:



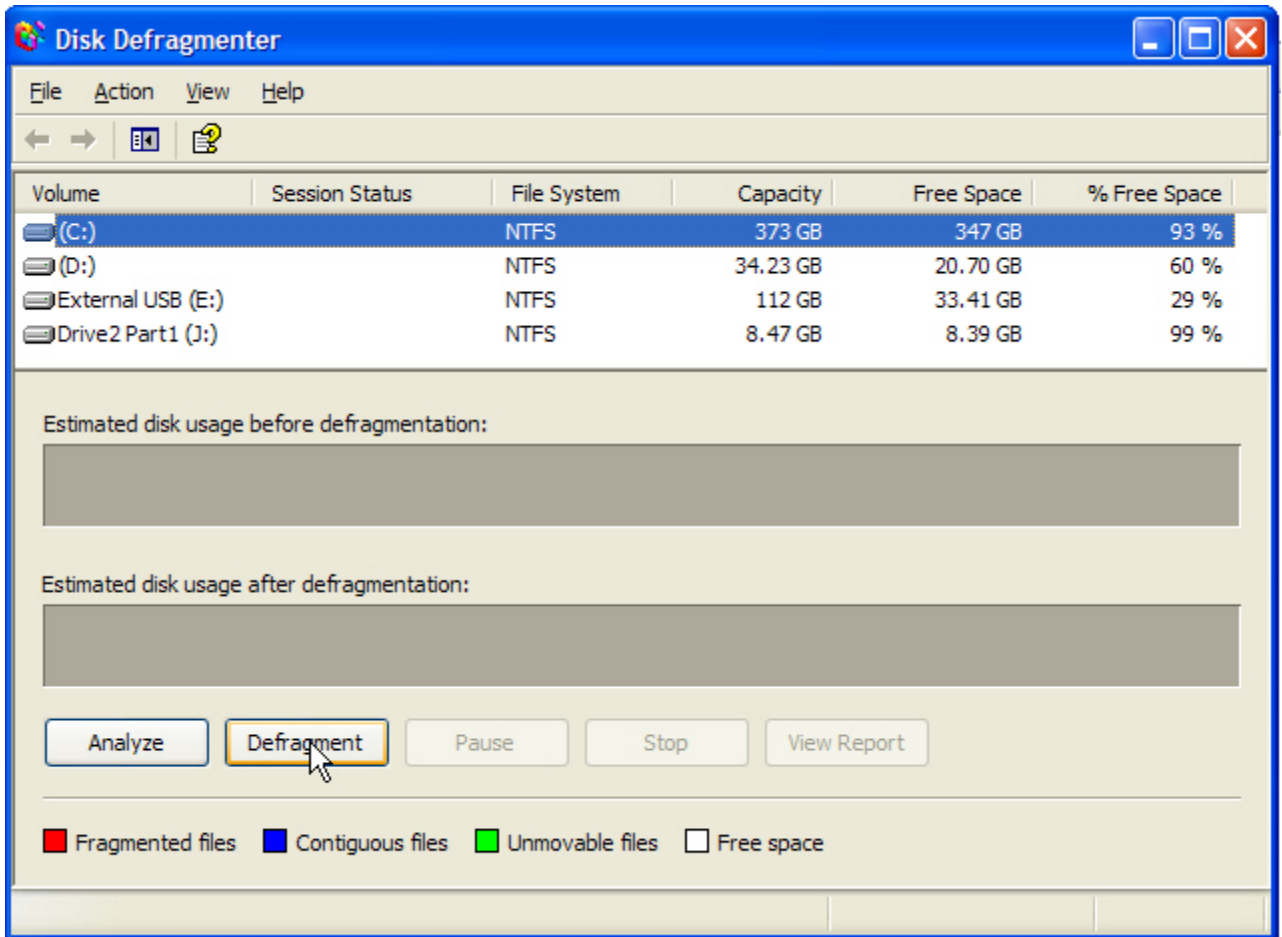
Choose **Properties**



**Click** on the **Tools** tab at the top and then click on **Defragment Now...**

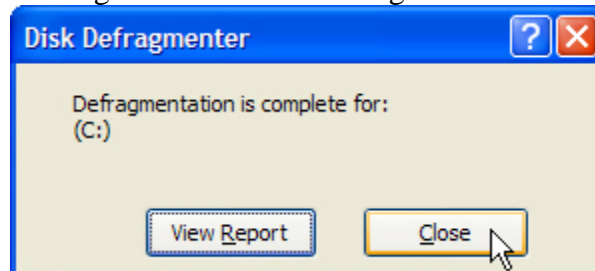


Be sure that drive C: is highlighted, if it isn't just **click** on it.



Click on **Defragment** button.

When it is through you will get this next little dialog. **Click** on Close.



Then click on **File | Exit**

